

Item	Part #	Description
1	see Pg.2	Manhole Collar

**DESCRIPTION**

The Manhole Collar is designed for applications involving frequent setups over similarly sized access openings. Simply slip collar into sewer manhole, tank hatch or other openings. Lightweight, powder-coated aluminum construction for portability. Available on request in anodized finish for additional corrosion and tank contamination resistance.

**General Specifications:**

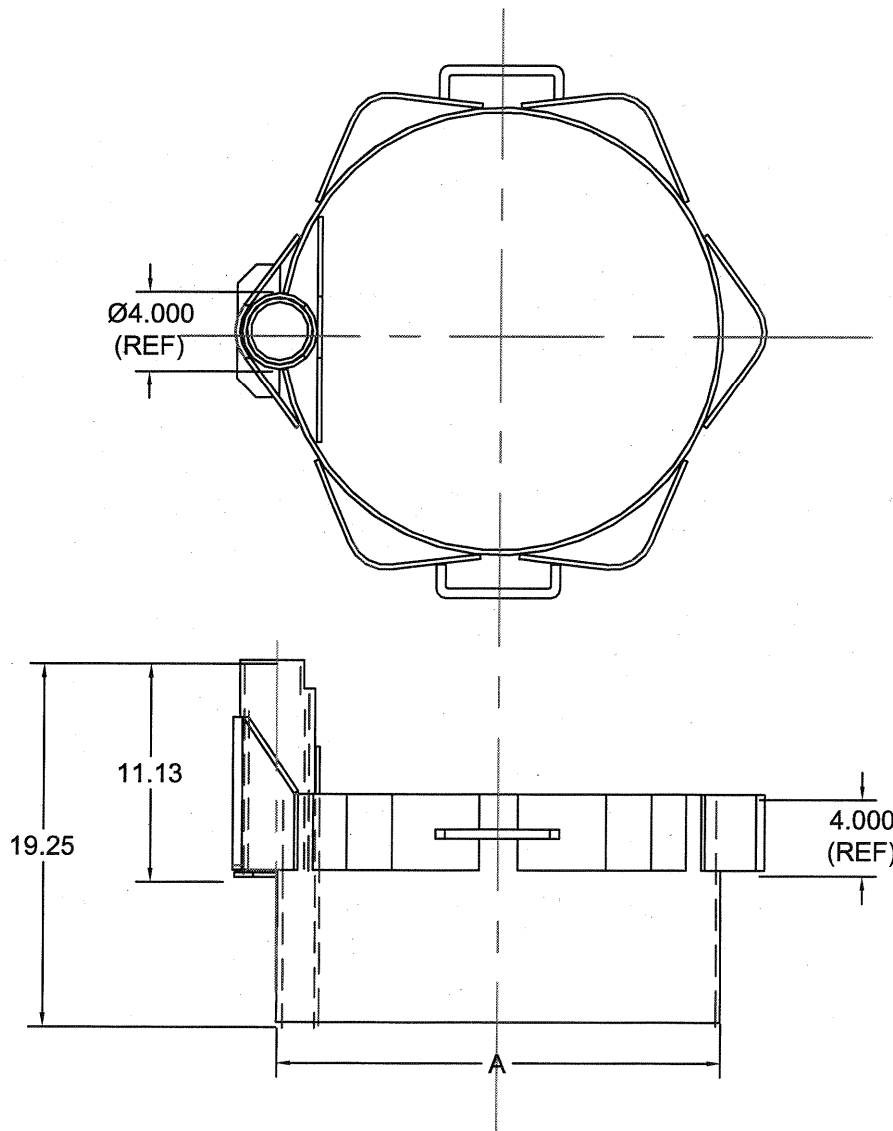
Mast Moment Rating	65,000 in.-lbs. (7350 N.m)
Proof Test	UCT-468
Mast Rotation	90 Degrees
Weight	35 - 60 lbs. (16 - 27 Kgs.)

**Materials & Construction:**

General Construction	Welded Aluminum
Weld Certification	CWB-47.2
Base Material	6061-T6, 5052 Aluminum
Sleeve	6061-T6 Aluminum
Hardware	GR.5 Zinc Plated
Finish	Safety Yellow powder coat

**Application Restrictions**

1. Inside diameter of manway being entered **MUST NOT** be more than 2 1/2" (60 mm) larger than the outside diameter (*Dimension "A" on the diagram on the back of this page*) of the collar insert tube.
2. This collar is designed for use **ONLY** on a horizontal, level surface. This collar **MUST NOT** be used to enter inclined manways.
3. Maximum mast offset with any manhole collar is to be 18" (457 mm).
4. Manholes or Manways **MUST BE** stable and secure. Structure surrounding the opening **MUST BE** capable of supporting a vertical load of at least 3600 lbs. (1650 Kg).
5. Retractable devices or shock absorbers must have maximum arrest force (M.A.F.) rating of 1800 lbs (8 KN.) or less.
6. Each installation must be approved to local standards by a qualified engineer.



**Order by Model #**

Manway (Diameter " A ")	Model #	Description (A)	Weight
18" - 20" in.	DH-11/17.5	17.5" in. Manhole Collar	30 lbs (13.6 kg)
20" - 22" in.	DH-11/19.5	19.5" in. Manhole Collar	33 lbs (15 kg)
22" - 24" in.	DH-11/21.5	21.5" in. Manhole Collar	35.5 lbs (16.1 kg)
24" - 26" in.	DH-11/23.5	23.5" in. Manhole Collar	38 lbs (17.3 kg)
26" - 28" in.	DH-11/25.5	25.5" in. Manhole Collar	40.5 lbs (18.4 kg)
28" - 30" in.	DH-11/27.5	27.5" in. Manhole Collar	42.5 lbs (19.3 kg)